

GD&ASSOCIATES

PROPERTIES LISTINGS | CANGGU EXCLUSIVES | BRITISH-STYLE INSPIRED MEETS TROPICAL



BRITISH-STYLE INSPIRED MEETS TROPICAL

BABAKAN, CANGGU

PRICE USD	PRICE IDR	OWNERSHIP
USD 649,000	IDR 11,085,000,000	Freehold
.....		
BEDS / BATHS	LEVEL	YEAR BUILT
4 / 5	2	2025
.....		
LAND SIZE +/-	LIVING SIZE +/-	DESIGN
350 sqm	350 sqm	
3.50 are	3.50 are	
.....		
CERTIFICATES	ZONING	VIEWS
SHM	Residential	Ricefield

This home combines tropical modern architecture with subtle British-inspired interior touches, creating a space with warmth, character, and a distinct sense of style. Raw concrete elements are balanced by refined organic finishes and carefully curated furnishings, while the property overlooks protected rice fields (green zone), ensuring permanently unobstructed views and a peaceful natural setting.

Designed for comfortable living, the house offers 4 bedrooms with ensuite bathrooms and 2 guest toilets, with one of the bedrooms currently set up as a fully equipped private gym. Wellness features include a sauna and ice bath, while a dedicated office adds practicality for remote work or daily use. Interior details such as a Chesterfield sofa, classic-inspired furniture pieces, and electric curtains give the home a unique identity without compromising its clean tropical aesthetic.

Located in Tuka, on the outskirts of Babakan, the home enjoys a quiet residential setting while remaining within easy reach of central Canggu. Just 5 minutes from BPA Padel and Nude Café, it is well suited as a private residence or Bali home for those seeking a calm environment with convenient access to everyday lifestyle destinations.

Gym | Home Office | Storage Room

GD&ASSOCIATES by Gilles Demunter®

©2021 PT SURGA TROPIS HIDUP. ALL RIGHTS RESERVED

www.gillesdemunter.com | info@gillesdemunter.com | +(62)819-99-971-591
GD Headquarters @ Made's Warung Unit #5, Jalan Raya Seminyak,
Seminyak, Kecamatan Kuta, Kabupaten Badung, Bali 80361, Indonesia.

GD&ASSOCIATES



OVERVIEW

REGULAR

OWNERSHIP: FREEHOLD

STATUS: DECENT

LAND SIZE: 350 sqm / 3.50 are

LIVING SIZE: 350 sqm / 3.50 are

LEVEL: 2

BED / BATH: 4 / 5.0

VIEWS: RICEFIELD

FURNISHING: FULLY-FURNISHED

PAYMENT TERM: NO

CERTIFICATION: SHM

ZONING: RESIDENTIAL

AMENITIES

✓ GYM

✓ HOME OFFICE

✓ STORAGE ROOM

OTHERS

NEARBY

MAI MAIN PLAYGROUND

LIGA TENNIS

NIRVANA

AMOLAS CAFE

INDIGO

KONG

SATOSHI

OBSIDIAN

SEMER VET

SOCCER FIELD

BALI BUDA UMALAS

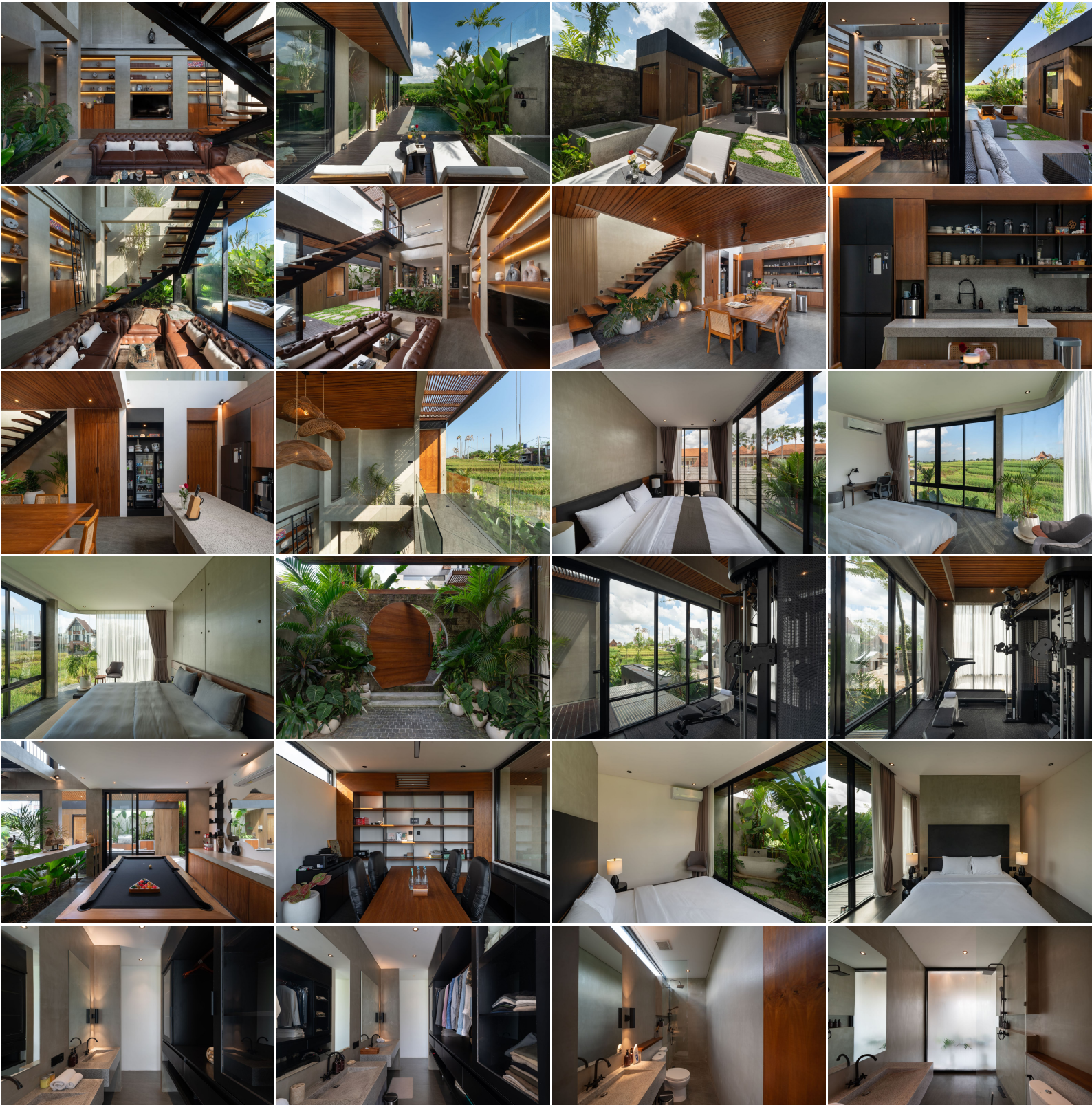
GD&ASSOCIATES *by Gilles Demunter*®

©2021 PT SURGA TROPIS HIDUP. ALL RIGHTS RESERVED

www.gillesdemunter.com | info@gillesdemunter.com | +(62)819-99-971-591

GD Headquarters @ Made's Warung Unit #5, Jalan Raya Seminyak, Seminyak, Kecamatan Kuta, Kabupaten Badung, Bali 80361, Indonesia.

GD&ASSOCIATES



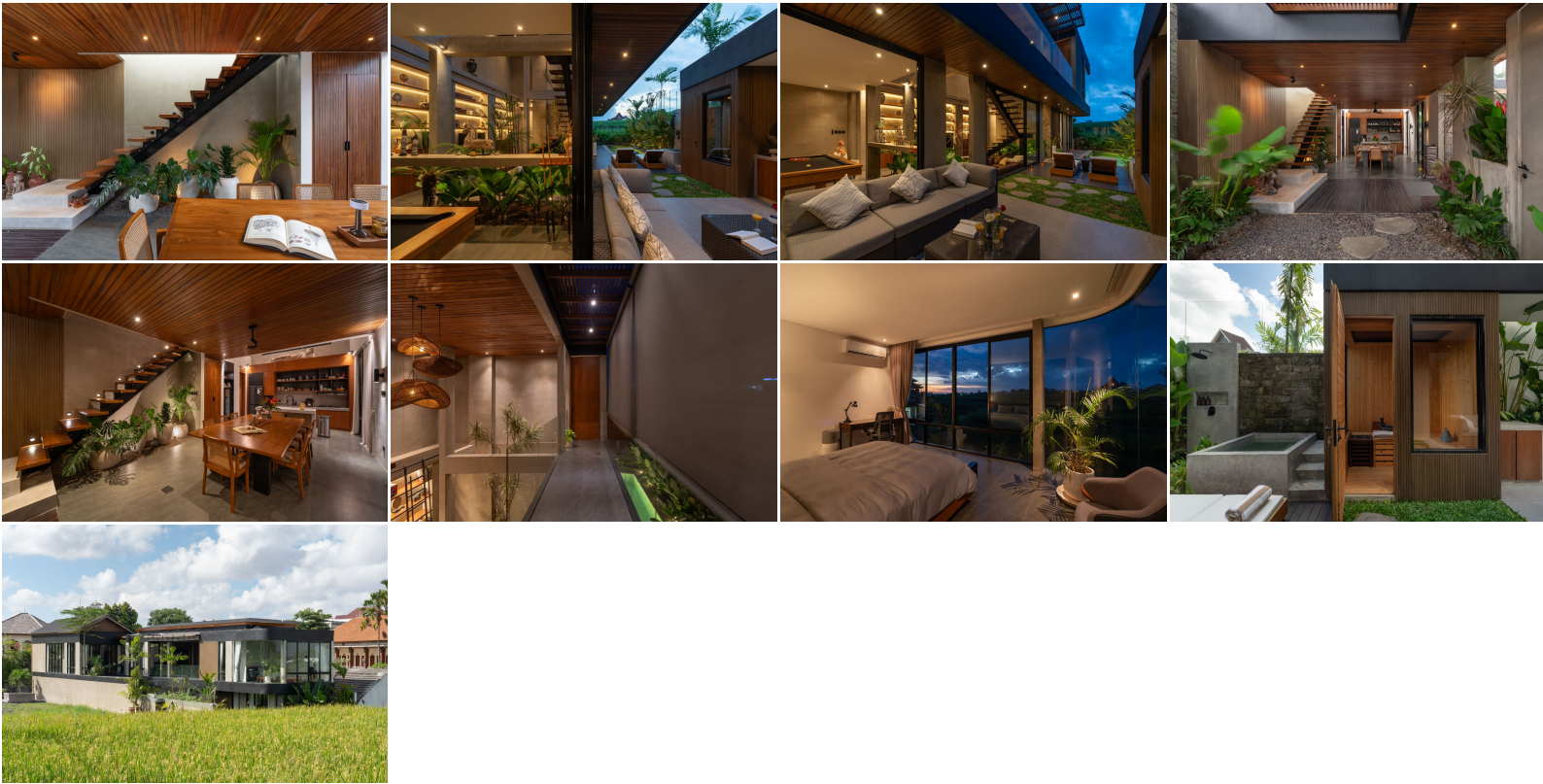
GD&ASSOCIATES *by Gilles Demunter*®

©2021 PT SURGA TROPIS HIDUP. ALL RIGHTS RESERVED

www.gillesdemunter.com | info@gillesdemunter.com | +(62)819-99-971-591

GD Headquarters @ Made's Warung Unit #5, Jalan Raya Seminyak, Seminyak, Kecamatan Kuta, Kabupaten Badung, Bali 80361, Indonesia.

GD&ASSOCIATES



GD&ASSOCIATES *by Gilles Demunter*®

©2021 PT SURGA TROPIS HIDUP. ALL RIGHTS RESERVED

www.gillesdemunter.com | info@gillesdemunter.com | +(62)819-99-971-591

GD Headquarters @ Made's Warung Unit #5, Jalan Raya Seminyak, Seminyak, Kecamatan Kuta, Kabupaten Badung, Bali 80361, Indonesia.